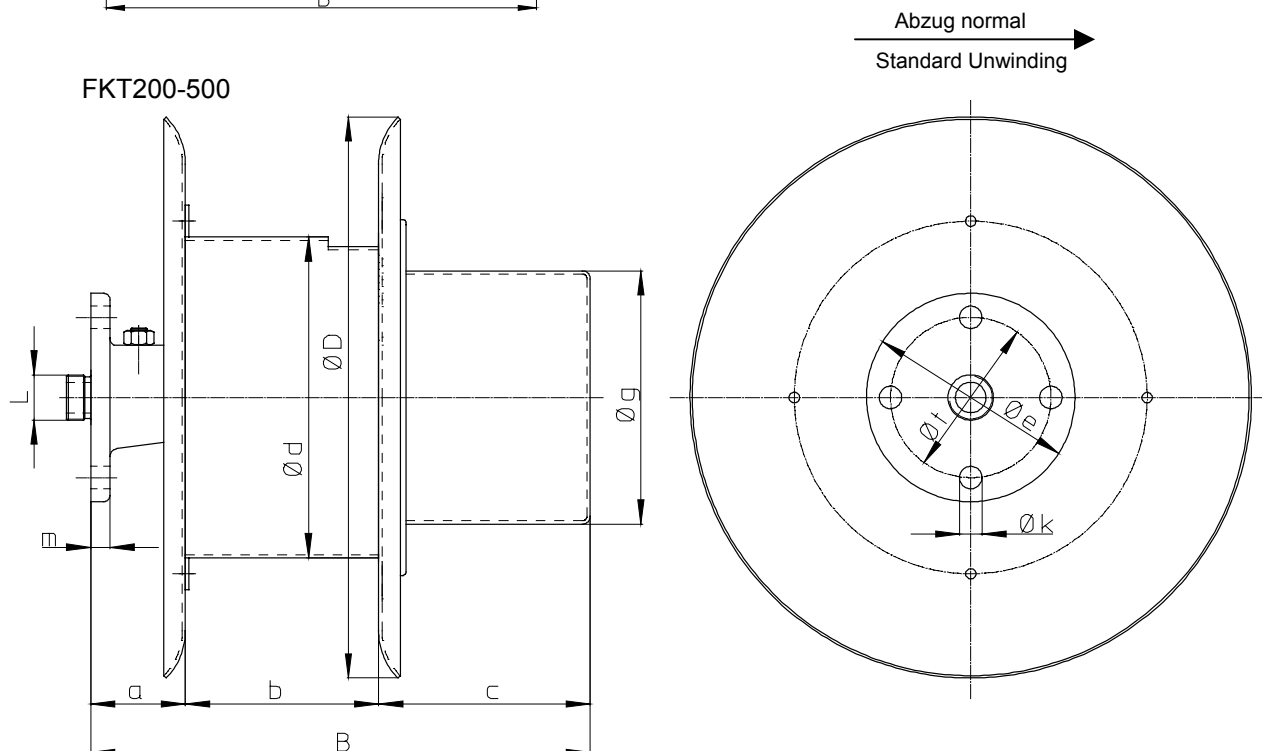
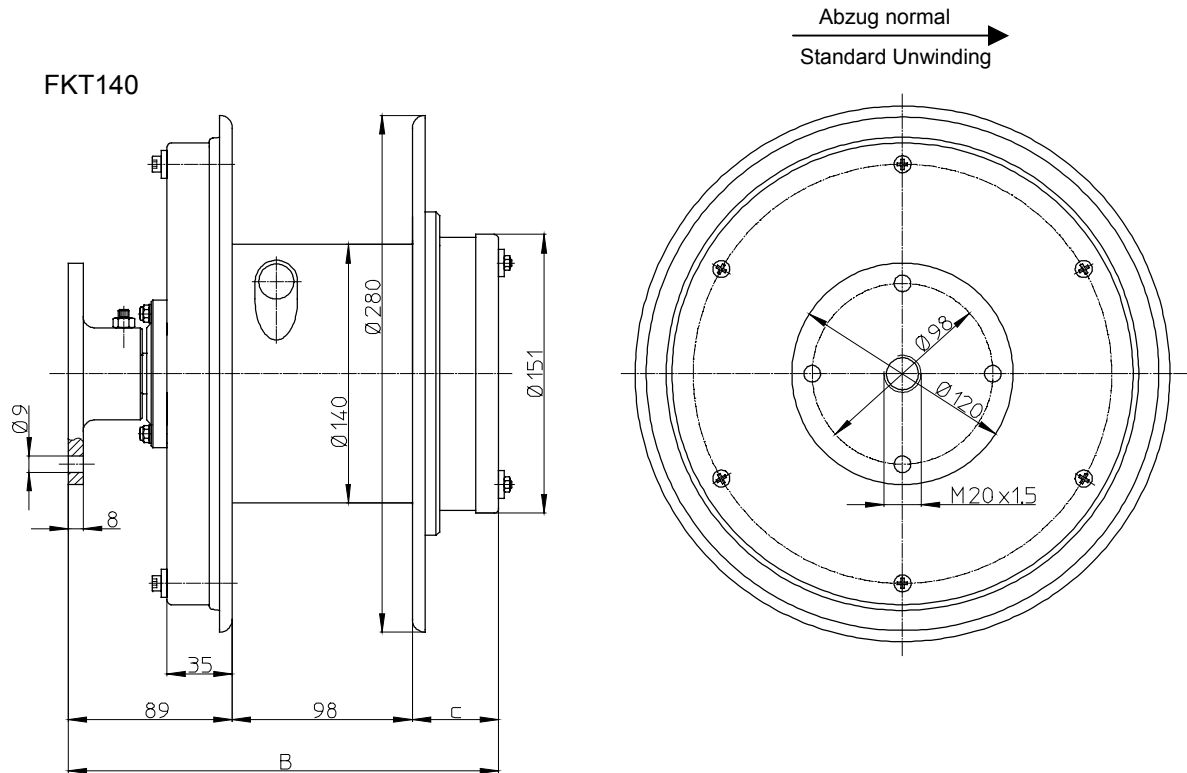




Federleitungstrommel FKT
Spring cable reel FKT

Maßzeichnung
Dimension sheet
M011-TR-0001D/E

Ausgabe: 01/04/2003





Federleitungstrommel FKT Spring cable reel FKT

Maßzeichnung
Dimension sheet
M011-TR-0001D/E

Ausgabe: 01/04/2003

Trommelabmessung FKT200 - 500
Dimensions of cable drum FKT200 - 500

| Trommel Cable drum | a | b | d | D | e | L | g | k | m | t |
|-----------------------|----|-----|-----|-----|-----|----|-----|----|----|-----|
| FKT200 | 60 | 125 | 200 | 350 | 130 | 36 | 160 | 14 | 12 | 100 |
| FKT270 | 60 | 175 | 270 | 450 | 130 | 46 | 225 | 14 | 15 | 100 |
| FKT400 | 70 | 200 | 400 | 700 | 180 | 46 | 344 | 17 | 18 | 140 |
| FKT501 | 80 | 240 | 500 | 800 | 220 | 60 | 344 | 17 | 20 | 180 |
| FKT502 | 80 | 310 | 500 | 800 | 220 | 60 | 344 | 17 | 20 | 180 |

Ausführung und Abmessung des Schleifringkörpers (Polzahl und Gehäuse)
Types and dimensions of slipringbody (number of poles and enclosure)

| Trommel Cable drum | Schleifring- körper Slipringbody | Strom I [A] | Spannung U [V] | max. Polzahl / (c ; B) max. number of poles / (c ; B) | | | | |
|-----------------------|--|----------------|-------------------|--|----------------|----------------|----------------|----------------|
| | | | | | | | | |
| FKT140 | 20 (SN20) | 25 | 415 | 4 /(47; 234) | 7 /(95; 282) | 9 /(125; 312) | - | - |
| | 21 (SN21) | | | 4 /(95; 282) | - | - | - | - |
| | 40 (SN40) | 47 | 1000 | 4 /(125; 312) | - | - | - | - |
| | 25 (SN25) | mA | mV | 4 /(47; 234) | 7 /(95; 282) | 9 /(125; 312) | - | - |
| FKT200 | 20 (SN20) | 25 | 415 | 4 /(132; 312) | 10 /(210; 390) | - | - | - |
| | 21 (SN21) | | | 2 /(132; 312) | 6 /(210; 390) | - | - | - |
| | 40 (S1) | 50 | 690 | 7 /(132; 312) | 15 /(210; 390) | - | - | - |
| | 25 (SN25) | mA | mV | 4 /(132; 312) | 10 /(210; 390) | - | - | - |
| FKT270 | 20 (SN20) | 25 | 415 | 7 /(190; 420) | 16 /(320; 550) | 18 /(450; 640) | - | - |
| | 30 (SN30) | | | 10 /(190; 420) | 26 /(320; 550) | 44 /(450; 640) | 52 /(510; 740) | - |
| | 41 (S2) | 65 | 1000 | 9 /(190; 420) | 18 /(320; 550) | 29 /(450; 640) | 34 /(510; 740) | - |
| | 25 (SN25) | mA | mV | 7 /(190; 420) | 16 /(320; 550) | 18 /(450; 640) | - | - |
| | 35 (SN35) | | | 10 /(190; 420) | 26 /(320; 550) | 44 /(450; 640) | 52 /(510; 740) | - |
| FKT400 | 20 (SN20) | 25 | 415 | 7 /(195; 463) | 16 /(320; 588) | 18 /(450; 718) | - | - |
| | 30 (SN30) | | | 10 /(195; 463) | 26 /(320; 588) | 44 /(450; 718) | 52 /(510; 778) | - |
| | 41 (S2) | 65 | 1000 | 9 /(195; 463) | 18 /(320; 558) | 29 /(450; 718) | 33 /(510; 778) | 42 /(610; 878) |
| | 60 (S4) | 100 | | 4 /(195; 436) | - | - | - | - |
| | 25 (SN25) | mA | mV | 7 /(195; 463) | 16 /(320; 588) | 18 /(450; 718) | - | - |
| | 35 (SN35) | | | 10 /(195; 463) | 26 /(320; 588) | 44 /(450; 718) | 52 /(510; 778) | - |



Federleitungstrommel FKT Spring cable reel FKT

Maßzeichnung
Dimension sheet
M011-TR-0001D/E

Ausgabe: 01/04/2003

Ausführung und Abmessung des Schleifringkörpers (Polzahl und Gehäuse)
Types and dimensions of slipringbody (number of poles and enclosure)

| Trommel Cable drum | Schleifring- körper Slipringbody | Strom I [A] | Spannung U [V] | max. Polzahl / (c ; B) max. number of poles / (c ; B) | | | | |
|--------------------------|--|----------------|-------------------|--|----------------|----------------|----------------|----------------|
| | | | | | | | | |
| FKT501 | 20 (SN20) | 25 | 415 | 7 /(200; 505) | 16 /(320; 625) | 18 /(450; 755) | - | - |
| | 30 (SN30) | | 690 | 10 /(200; 505) | 26 /(320; 625) | 44 /(450; 755) | 52 /(510; 815) | - |
| | 41 (S2) | 65 | 1000 | 9 /(200; 505) | 18 /(320; 625) | 29 /(450; 755) | 33 /(510; 815) | 42 /(610; 915) |
| | 60 (S4) | 100 | | 4 /(200; 505) | - | - | - | - |
| | 70 (S5) | 150 | | 6 /(320; 625) | - | - | - | - |
| | 25 (SN25) | mA | mV | 7 /(200; 505) | 16 /(320; 625) | 18 /(450; 755) | - | - |
| | 35 (SN35) | | | 10 /(200; 505) | 26 /(320; 625) | 44 /(450; 755) | 52 /(510; 815) | - |
| FKT502 | 20 (SN20) | 25 | 415 | 7 /(200; 575) | 16 /(320; 695) | 18 /(450; 825) | - | - |
| | 30 (SN30) | | 690 | 10 /(200; 575) | 26 /(320; 695) | 44 /(450; 825) | 52 /(510; 885) | - |
| | 41 (S2) | 65 | 1000 | 9 /(200; 575) | 18 /(320; 695) | 29 /(450; 825) | 33 /(510; 885) | 42 /(610; 985) |
| | 60 (S4) | 100 | | 4 /(200; 575) | - | - | - | - |
| | 70 (S5) | 150 | | 6 /(320; 695) | - | - | - | - |
| | 25 (SN25) | mA | mV | 7 /(200; 575) | 16 /(320; 695) | 18 /(450; 825) | - | - |
| | 35 (SN35) | | | 10 /(200; 575) | 26 /(320; 695) | 44 /(450; 825) | 52 /(510; 885) | - |