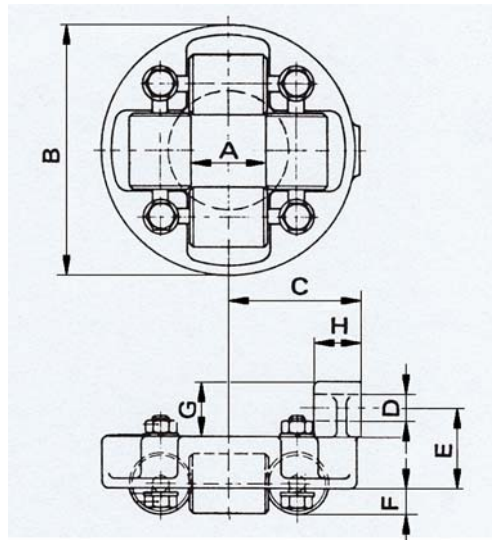




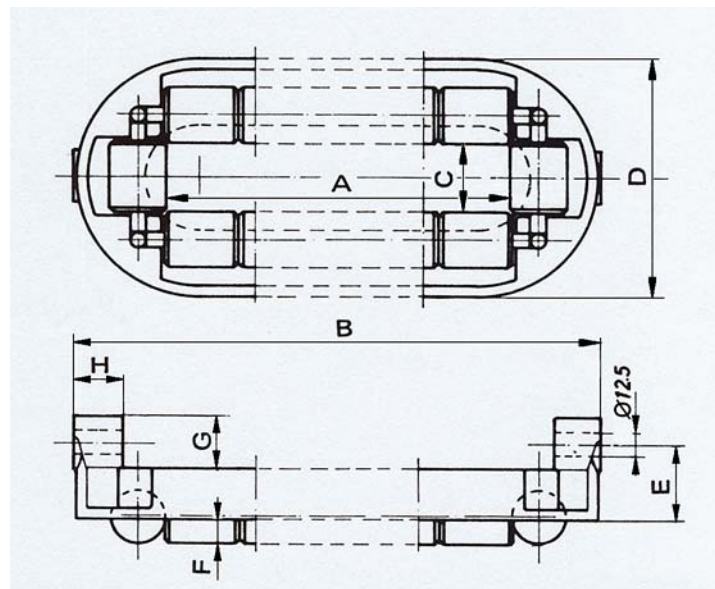
**Kabelführungen
Roller guide**

Maßzeichnung
Dimension sheet
M041-KF-0001 D/E

Type KF1



Type KFL



Typ Type	Art.-Nr. Art.-No.	Leitungs-Ø cable- diameter [mm]	A [mm]	B [mm]	C [mm]	D [mm]	E [mm]	F [mm]	G [mm]	H [mm]	Gewicht Weight [kg]
KF 1	0400044	bis 35	35	123	64	13	40	12,5	26	23	0,6
KFL 1	0400045		111	206	36	125				24	1,1
KFL 2	0400046		225	320							
KFL 3	0400047		263	358							
KFL 4	0400048		301	396							

Gehäuse aus Aluminiumguss, Laufrolle aus Nylon, Achsen rostfrei.
Cast aluminium housing, nylon castor, stainless steel axles.